

Step by step installation of USB control module

USER'S MANUAL (V1.0)

健昇科技股份有限公司

JS AUTOMATION CORP.

台北縣汐止市中興路 100 號 6 樓

6F,NO.100,Chungshin Rd.

Shitsu,Taipei,Taiwan,R.O.C.

TEL : 886-2-2647-6936

FAX : 886-2-2647-6940

<http://www.automation.com.tw>

E-mail : control.cards@automation.com.tw

CONTENTS

STEP BY STEP INSTALLATION OF CONTROL CARD	3
A. HARDWARE INSTALLATION.....	3
B. WHERE TO FIND THE FILES?	3
<i>Download from website or CD web page</i>	<i>3</i>
<i>Directly access from CD archives.....</i>	<i>6</i>
C. SOFTWARE INSTALLATION	7
D. VERIFICATION OF INSTALLATION.....	11
E. INSTALL FOR LABVIEW.....	16

Step by step installation of control card

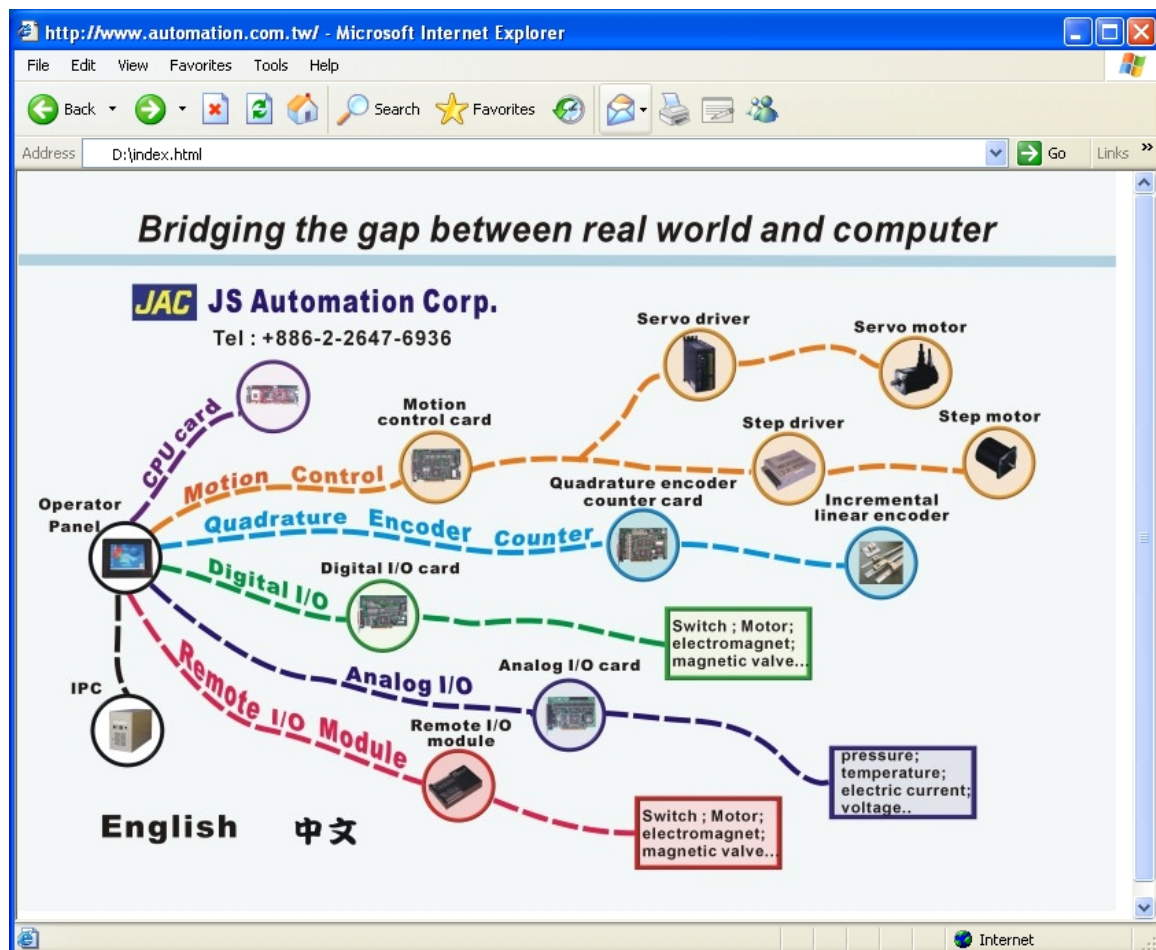
To install a USB control module is an easy job, if you follow the directions step by step.

A. Hardware installation

1. Power on your PC system and wait until the system ready.
2. Use a USB cable to connect the control module and computer.
- ... the system will find a new device, then please follow the following steps to install.

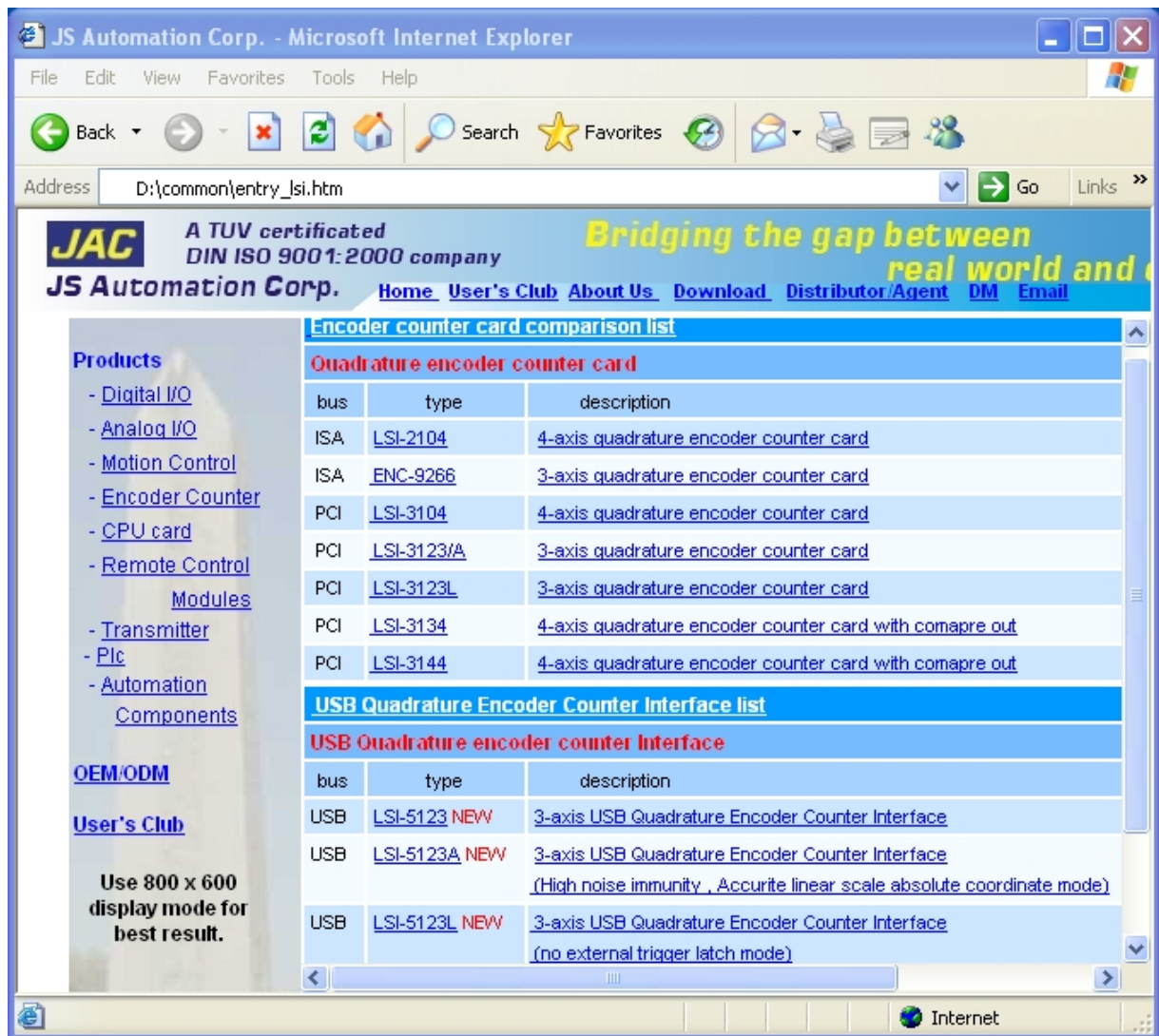
B. Where to find the files?

- *Download from website or CD web page*



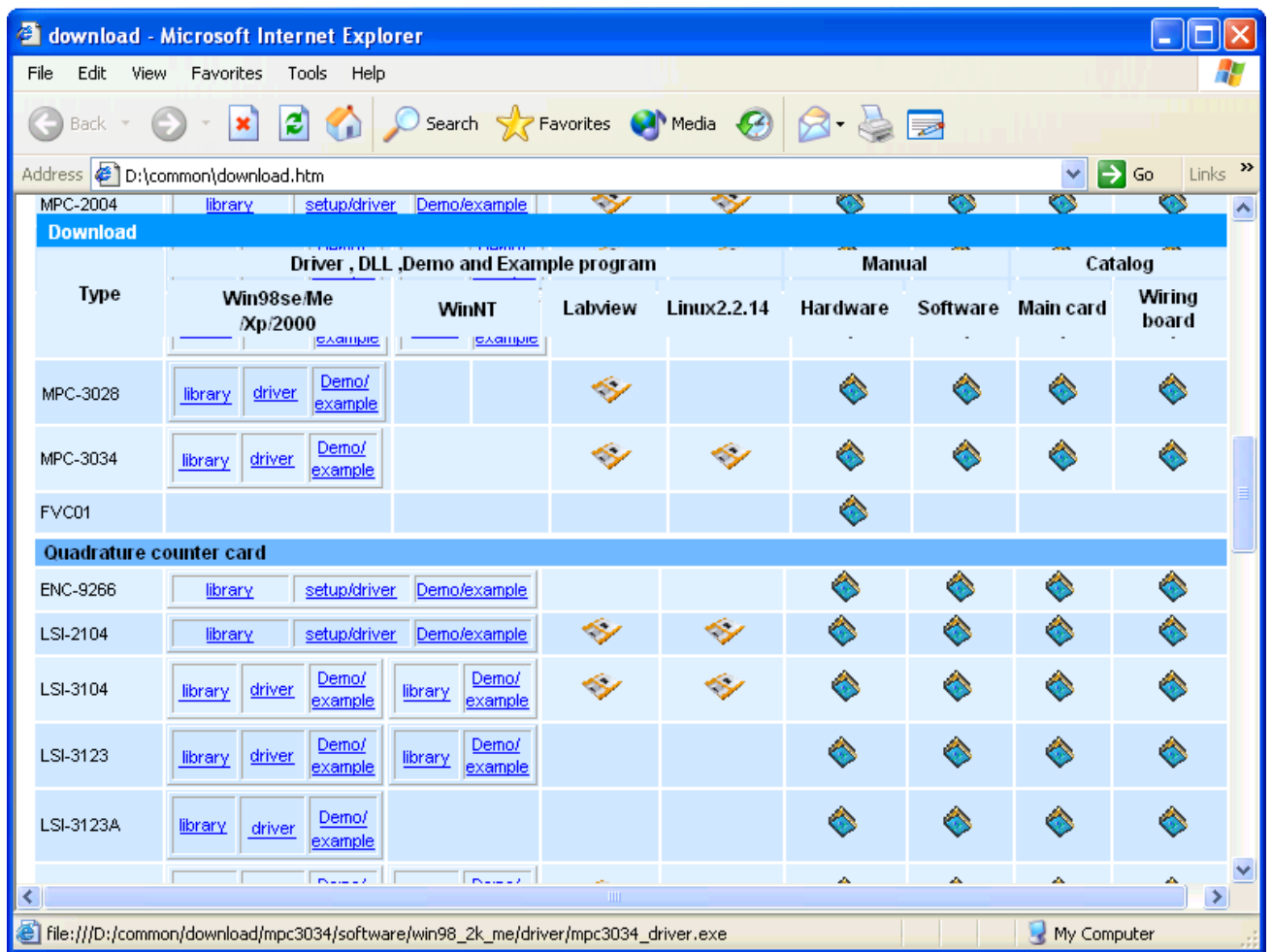
picture- 1

1. From CD.
 - Put the CD in the drive and auto play or click to open the 'index.html'.
 - Visit website 'http://www.automation.com.tw'
- Choose the any of the product to enter the webpage.



picture- 2

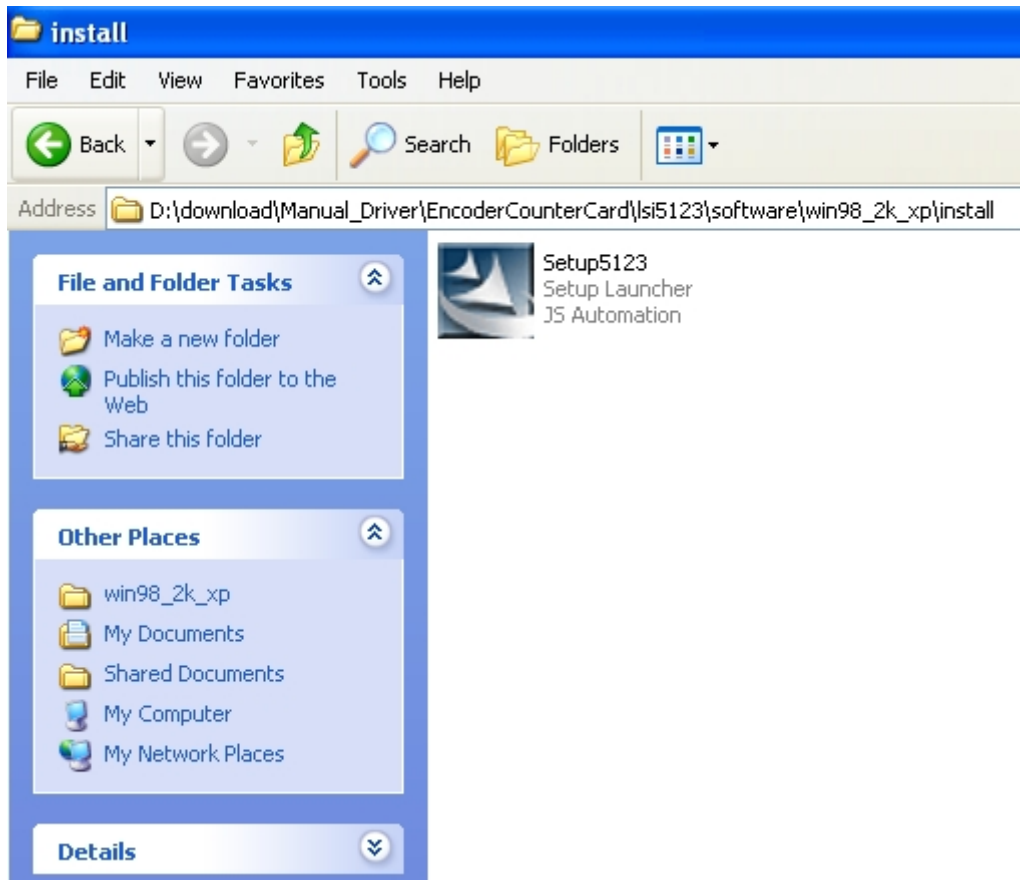
2. Click 'Download' at the header bar. All the documents of products are stored under the directory.



picture- 3

- Find out the under installation card and click the corresponding file you need to download from the CD.

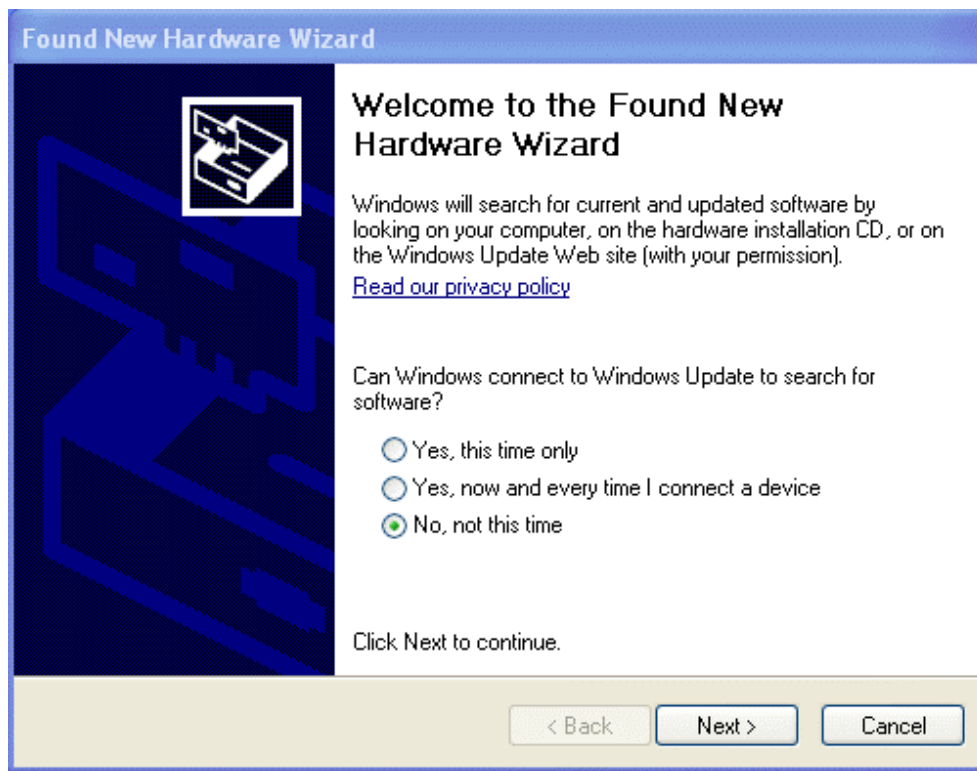
- *Directly access from CD archives*



picture- 4

1. Open the desired file directly from CD under the directory
'..\download\Manual_Driver\ **product_group**\ **product_name**\software**os_version**\install'.
Say, we will install USB control module under windows XP.
the directory will be '..\download\Manual_Driver\ EncoderCounterCard\lsi5123\software\
win2k_xp\install'
2. There is a file under the directory.
Setup**card_number**.exe the auto installation file of user application interface data,
drivers, and demo program source.
3. For lsi5123, the files will be Setup**5123**.exe

C. Software installation



picture- 5

1. When you connect the USB cord between the control module and the PC system, the system will find a new device. click 'Cancel' to close the dialog box.
2. Open the '.:download\Manual_Driver\EncoderCounterCard\lsi5123\software\win98_2k_xp\install'
3. Execute the install file 'Setup5123', then you will see the 'Choose Setup Language' dialog box.



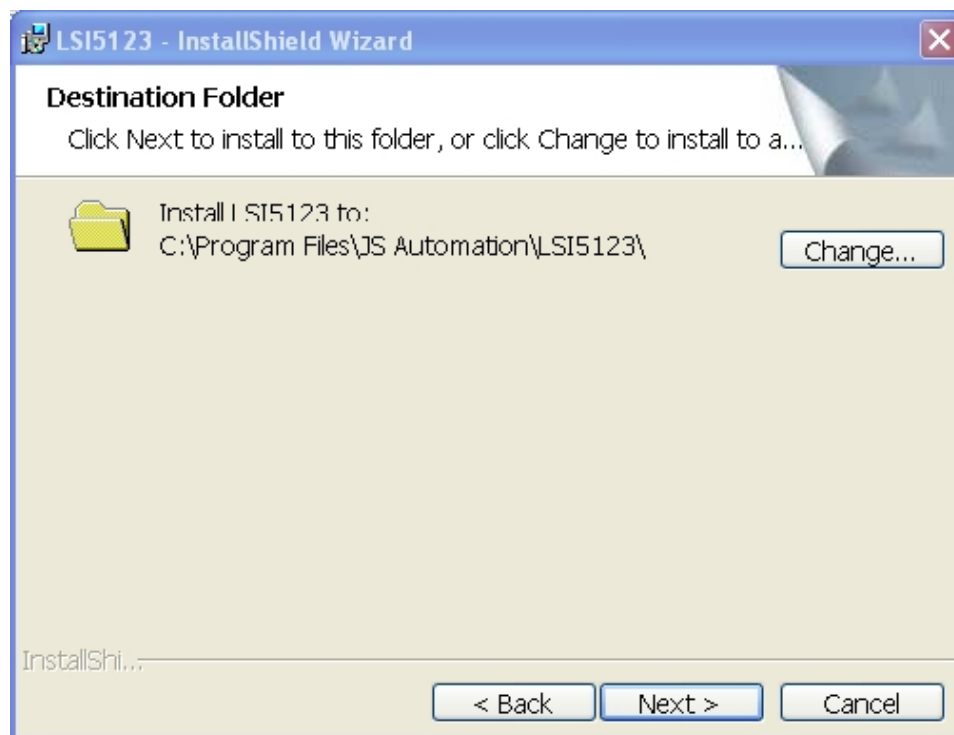
picture- 6

4. Select "English(United States)" language for this installation then click "OK".



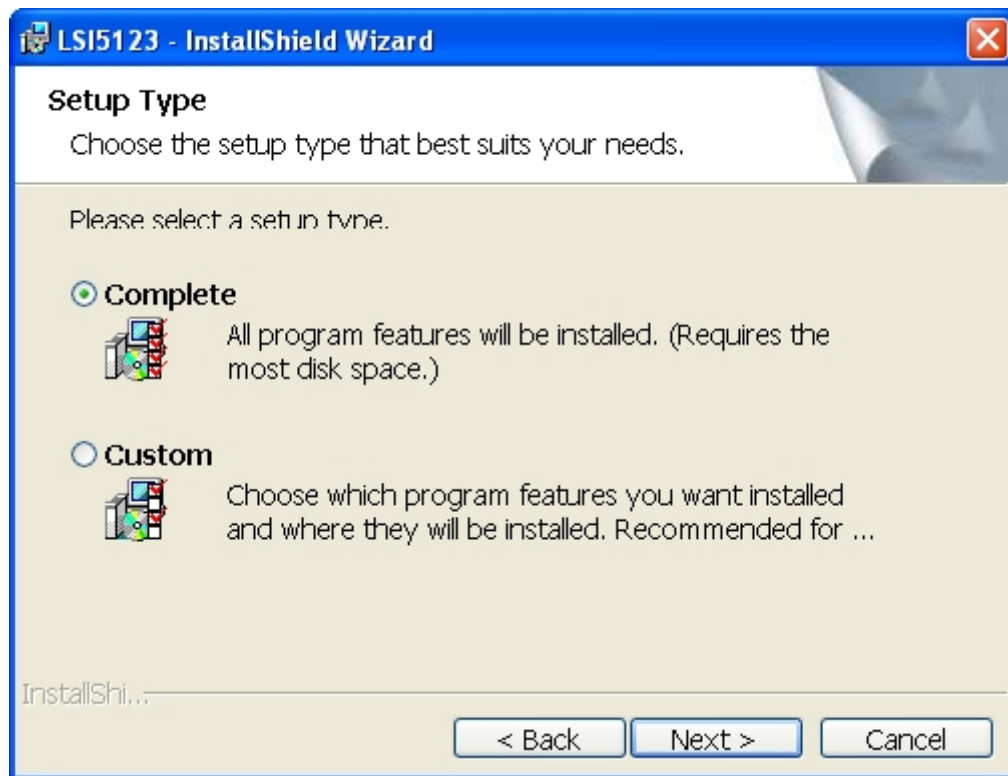
picture- 7

5. click "Next" for the Welcome dialog box.



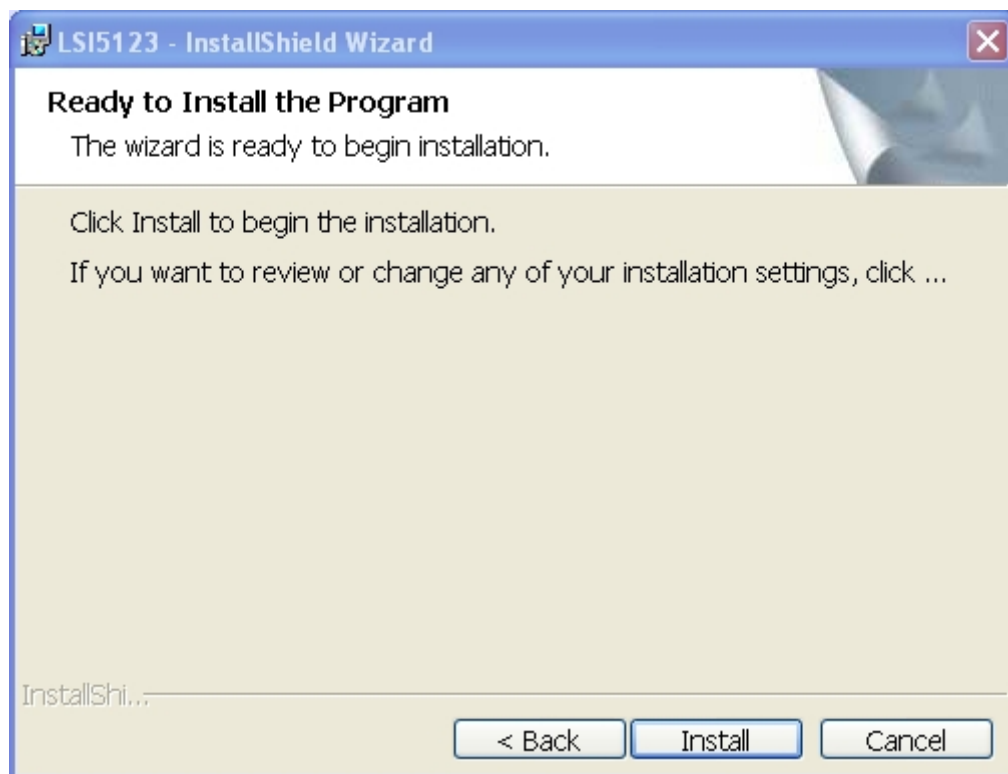
picture- 8

6. Confirm the Destination folder and click 'Next'.



picture- 9

7. Choose 'Complete' and click 'Next' to install all program features.



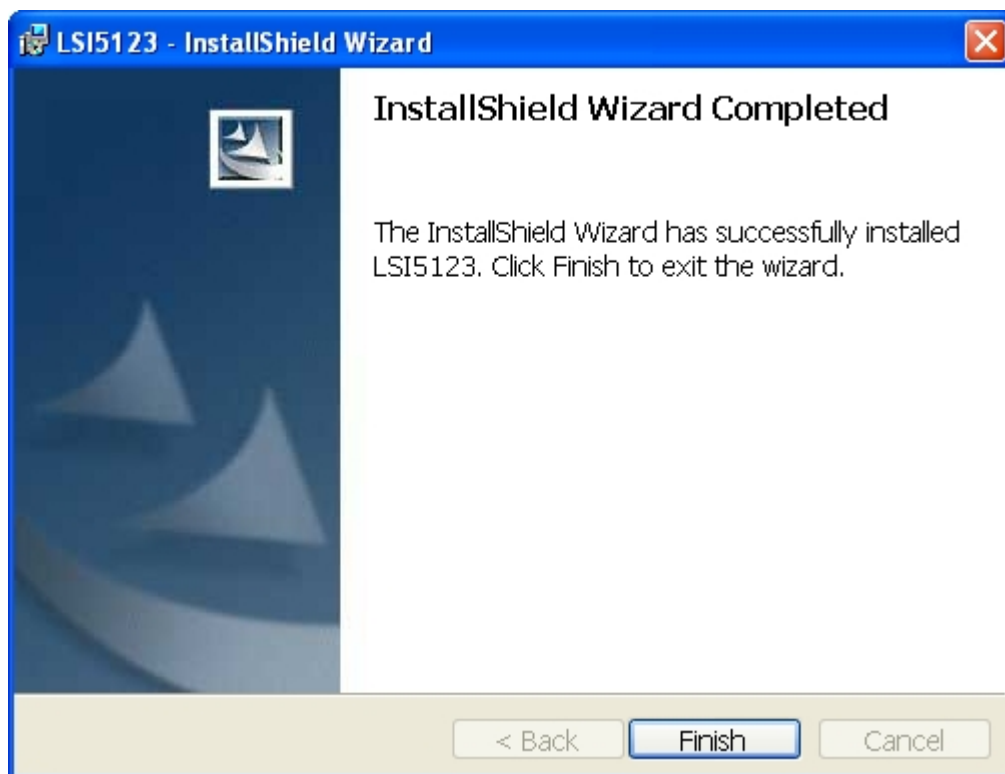
picture- 10

8. Click 'Install' to begin the installation



picture- 11

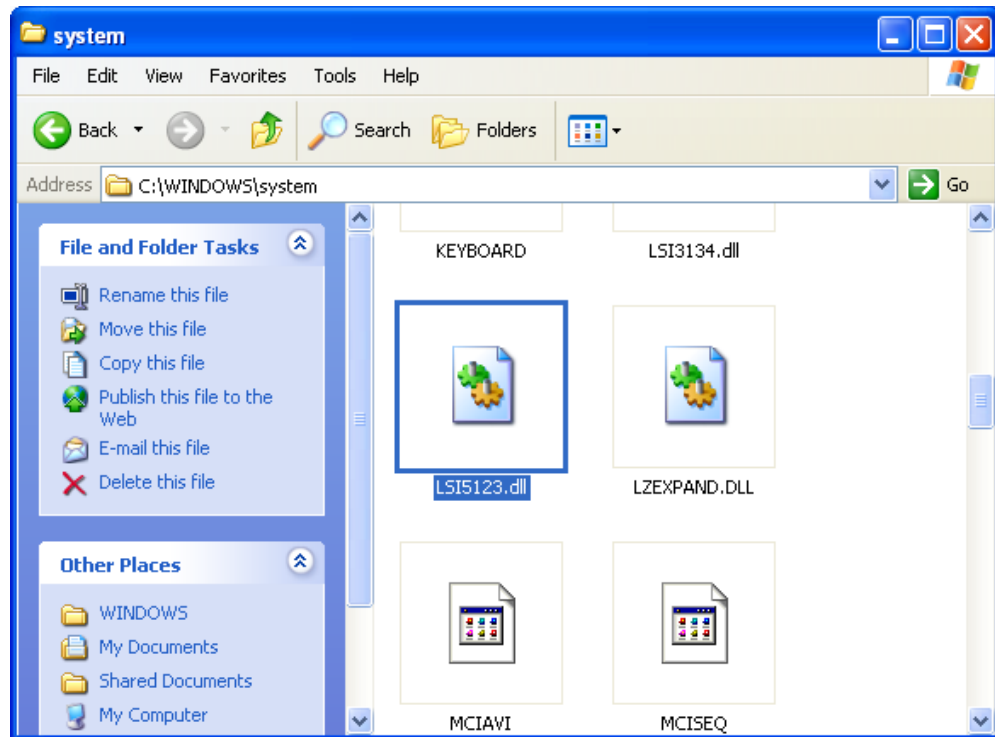
9. Wait for the system copies files.



picture- 12

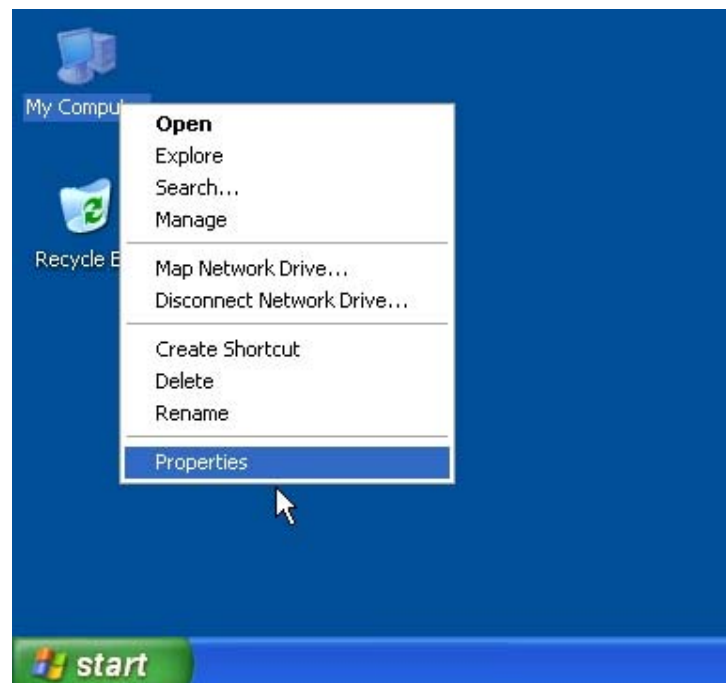
10. click 'Finish' to complete the installation.

D. Verification of installation



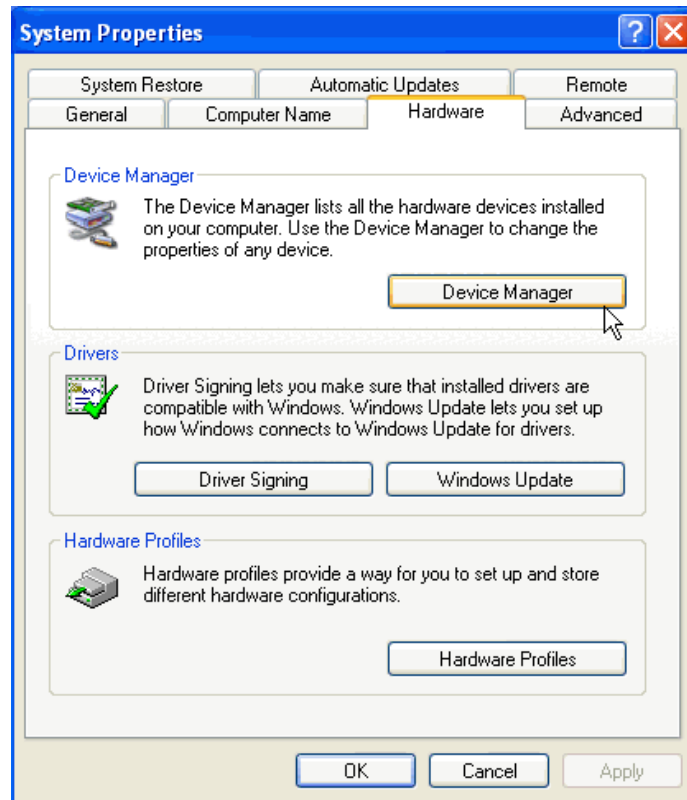
picture- 13

1. LSI5123 driver will add to \ windows\system\



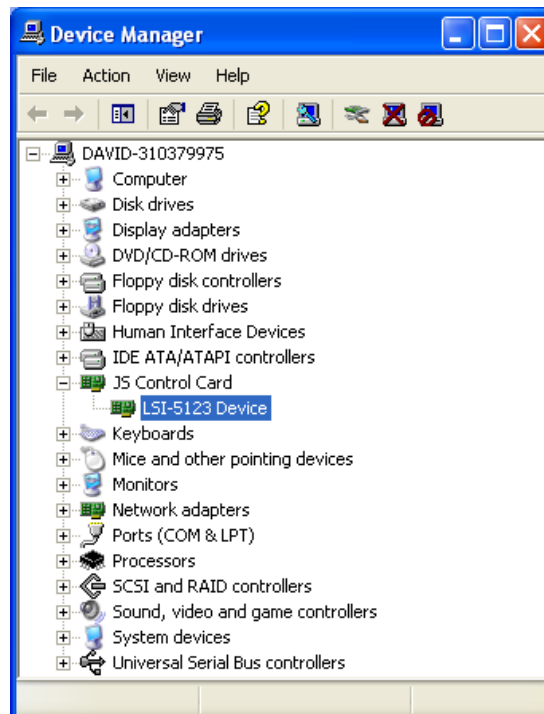
picture- 14

2. Click right button, select 'Property'



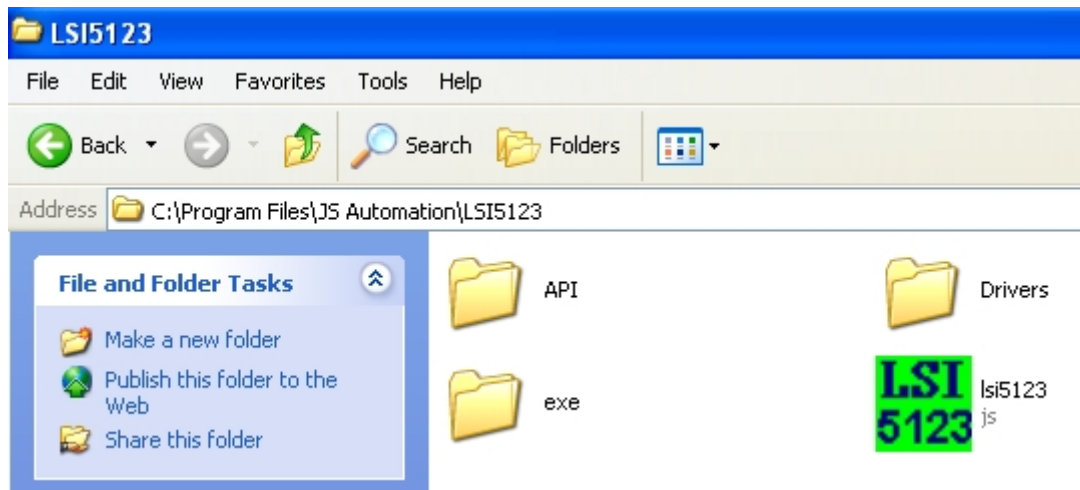
picture- 15

3. Select 'Hardware->Device Manager' to check the installation result.



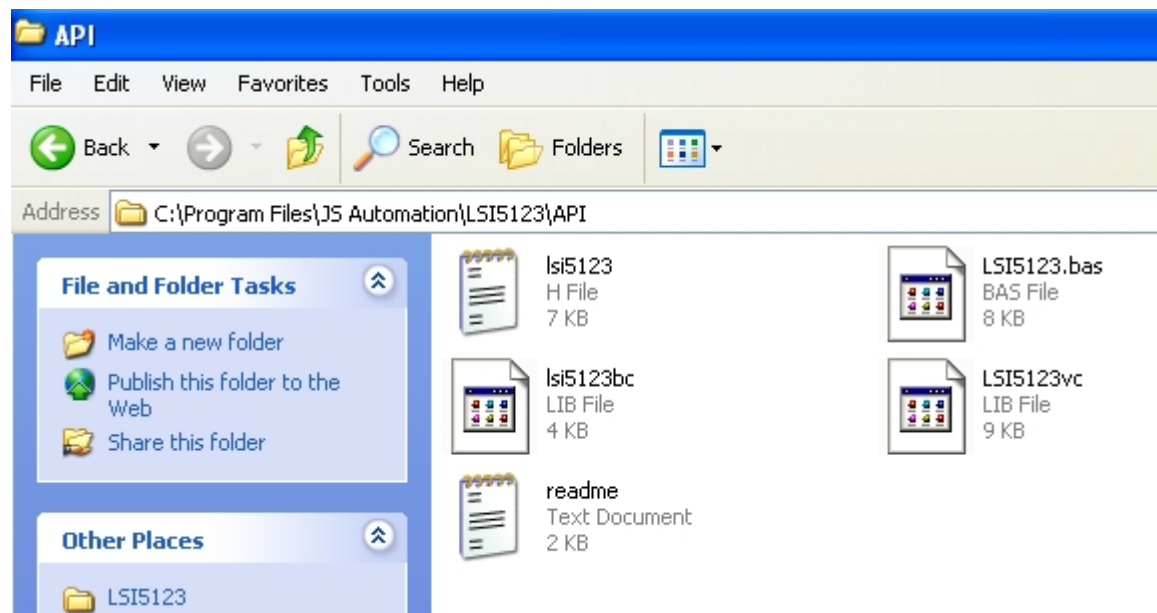
picture- 16

4. There is a new created directory 'JS Control Card' and under it the card installed is listed.



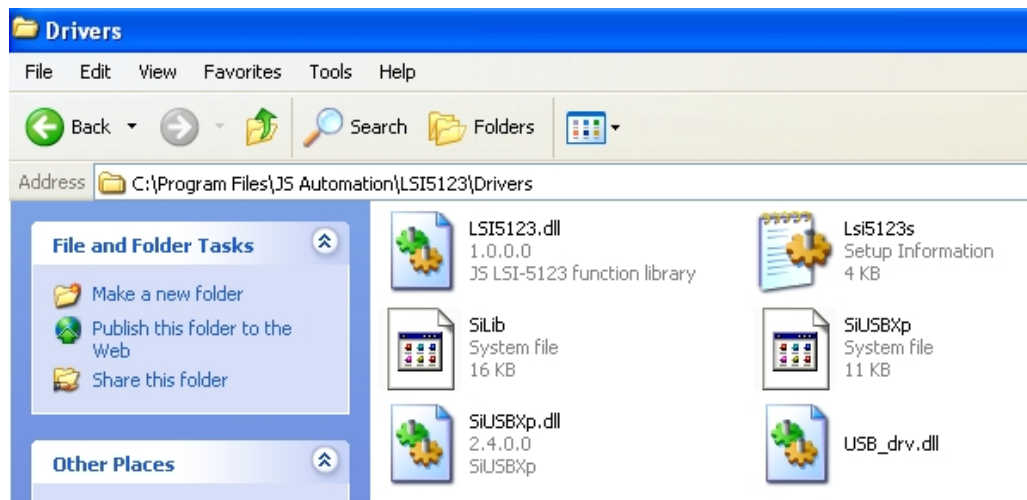
picture- 17

11. Installation create 3 new file folders: \API , \Drivers and \exe.



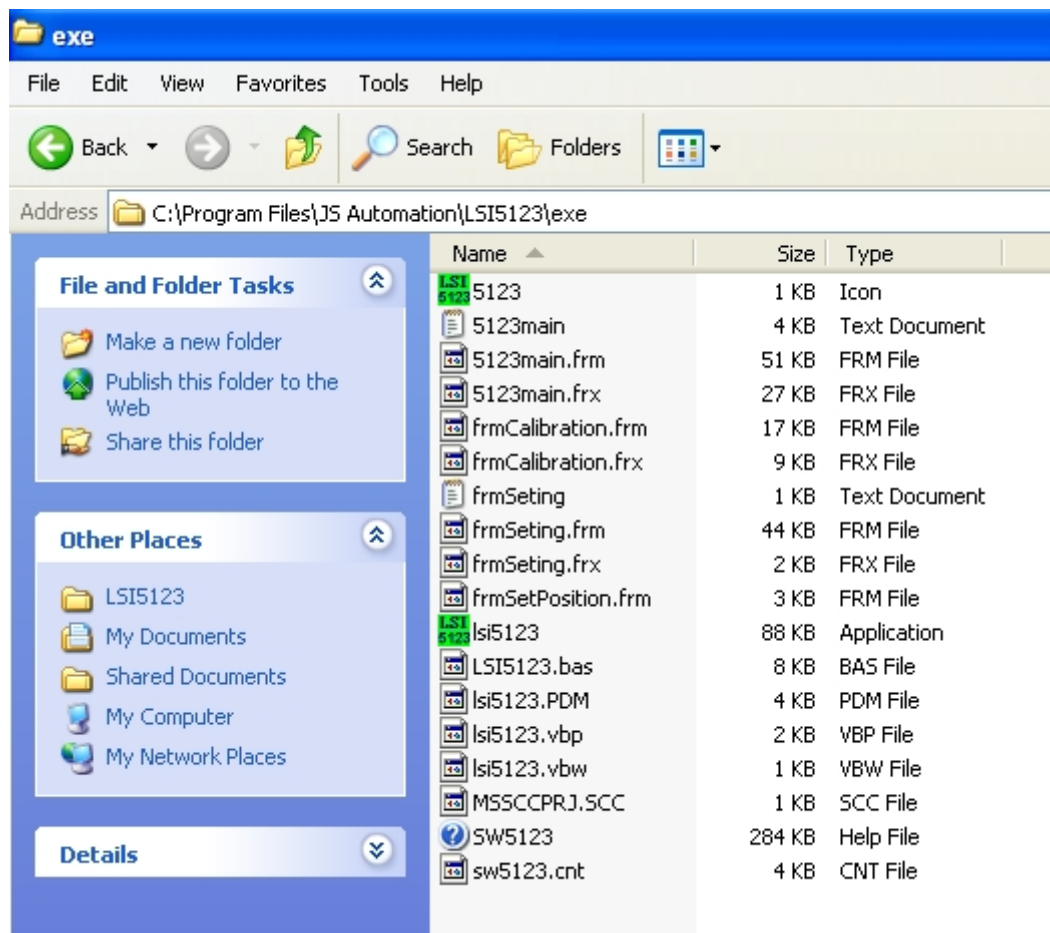
picture- 18

12. The users generally need the header file for VB and VC or Borland C++ builder. JS Automation has prepared the heading for the users. All the header files are in \API



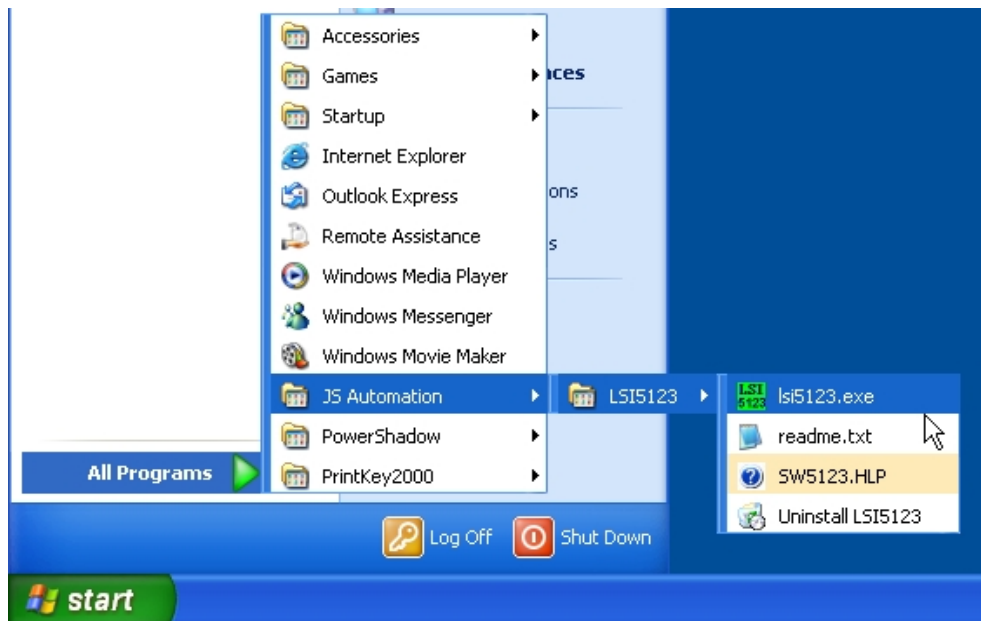
picture- 19

13. There is a copy of Driver files in \Drivers



picture- 20

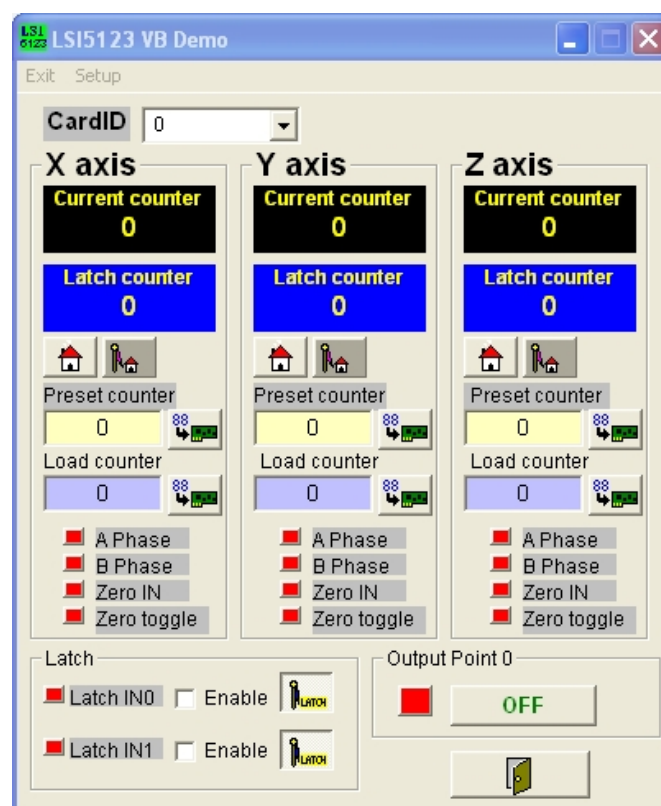
14. The demo program installed at \Program Files\JS Automation\LSI5123\exe\



picture- 21

15. The installation also setup new items in the Start->All Programs->JS Automation->LSI5123.

16. Now you can select 'lsi5123.exe' to run demo program.



picture- 22

17. The demo program of control card will demo all the function provided for the green hand user. JS Automation also provides the source code for the user's reference. (To get the source code you must install the API.)
18. Now you have installed all the files to your pc.
19. Have fun and luck for your new application.

E. Install for Labview

1. Copy the folders under '\download\labview_driver\' to your labview directory.
2. All the vi functions of control cards will be at hand.