



# Bridging the Gap between Real World and Computer

## Hand-held Manual Pulse Generator



### Features

- ▶ All in one hand-held box with
  - axis select switch
  - rate override switch
  - reset switch
  - pulse generator
- ▶ Magnetic hook
- ▶ Fool-proof safety push button

### Specifications

#### Voltage Output Type:

- ▶ Power Requirement : 5Vdc ~ 15Vdc
- ▶ Current Requirements : 60mA (max.)
- ▶ Frequency Response : 5KHz
- ▶ Output Voltage :  $V_H = V_{CC} \times 0.7$  (min);  $V_L = 0.5V$  (max.)
- ▶ Rise/Fall time : 1usec (max.)
- ▶ Resolution (P/R) : 100
- ▶ Normal Rotational Speed : 200r/min or less
- ▶ Slew Speed : 600r/min
- ▶ Dial Click Life :  $3x 10^5$  turns (200rpm Less)

#### Line Driver Type:

- ▶ Power Requirement : 5Vdc  $\pm 0.25Vdc$
- ▶ Current Requirements : 160mA (max.)
- ▶ Frequency Response : 5KHz
- ▶ Output Voltage :  $V_H = 2.5V$  (min.);  $V_L = 0.5V$  (max.)
- ▶ Rise/Fall time : 0.1usec (max.)
- ▶ Resolution (P/R) : 100
- ▶ Normal Rotational Speed : 200r/min or less
- ▶ Slew Speed : 600r/min
- ▶ Dial Click Life :  $3x 10^5$  turns (200rpm Less)

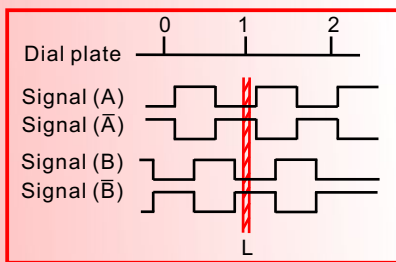
#### Environments:

- ▶ Operation Temperature :  $-10^\circ C \sim +60^\circ C$
- ▶ Storage Temperature :  $-120^\circ C \sim +70^\circ C$
- ▶ Weight (Without Cable) : 250g
- ▶ Cable Length : 3M

### Ordering Information

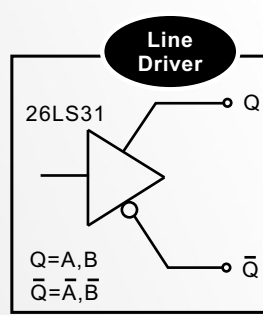
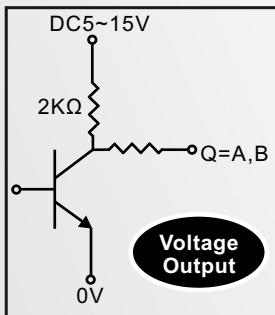
- ▶ JS90ZSJ01 : Hand-held Manual Pulse Generator (Voltage Output)
- ▶ JS90ZSJ01-3 : Hand-held Manual Pulse Generator (Line Driver Output)

### Click Point



- Click-stop position falls within hatched area.

### Output Type

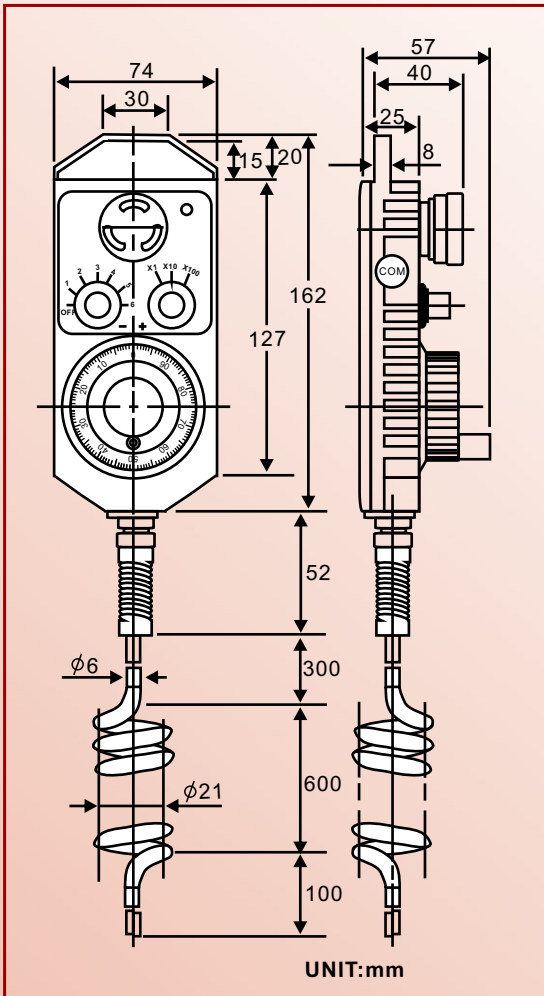


## Note

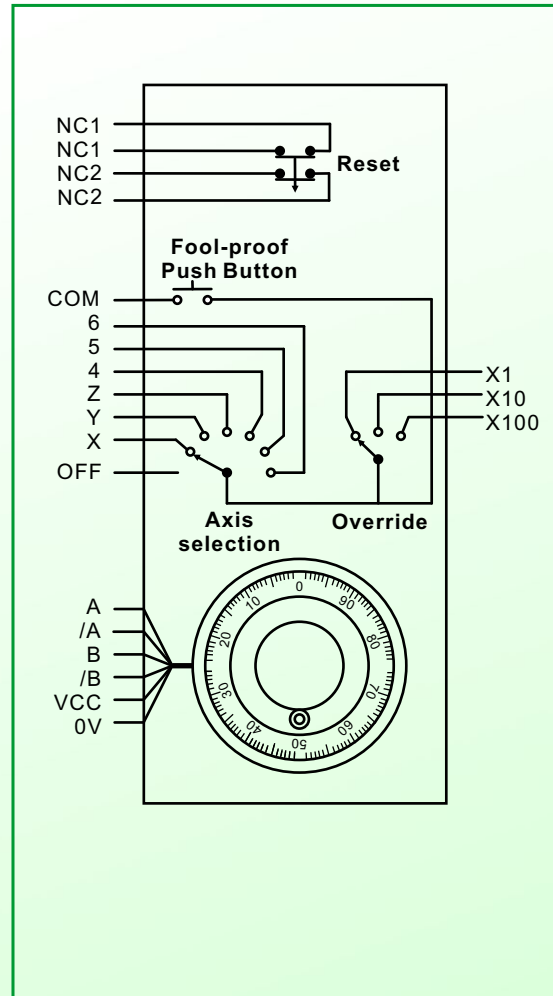


# Bridging the Gap between Real World and Computer

## Dimensions



## Connection



## Note